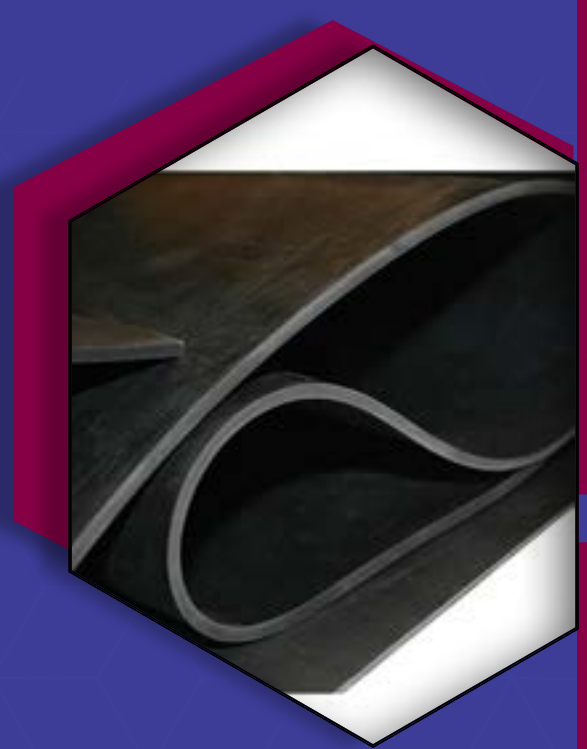


SBR



UNITS	SPECIFICATIONS
Density	80 - 160 Kg/m ³
Thickness	10 mm - 70 mm
Width	1 m
Length	1m (Variable in case of rolls)

What is SBR foam:

SBR foam (Styrene Butadiene Rubber) is one of the closed cell co-polymer family. Its similarity to natural rubber makes it a very efficient and effective product in specific occasions. Additionally, it can be joint with natural rubber materials to make it even more proficient

Advantages:

Affordable replacement for NR, high water resistance, abrasion and aging resistance, flexibility

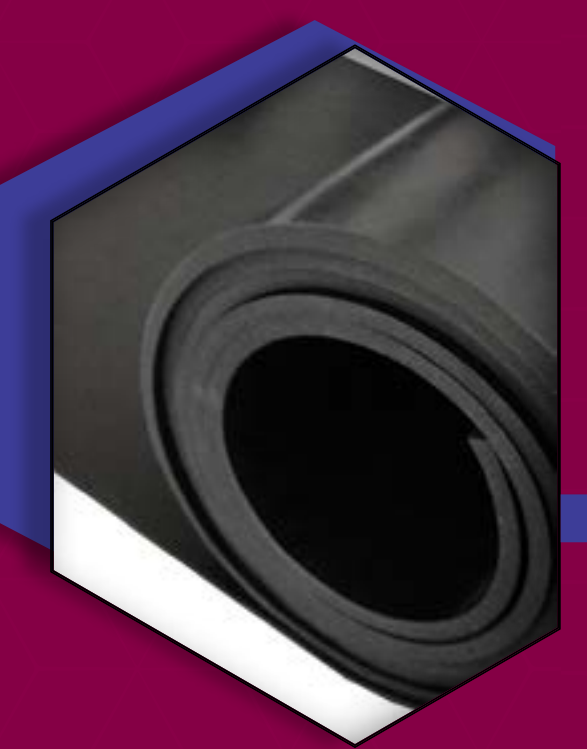
Disadvantages:

Low Resistance against flames, Ozone, Hydrocarbon Solvents and Oil, difficult processing abilities.

Suggested Applications:

- Automotive industry
- Tire industries
- Aeronautics
- Sealing
- Insulating and Isolating
- Potting for electronic parts

CR (Neoprene)



UNITS	SPECIFICATIONS
Density	120 - 190 Kg/m ³
Thickness	30 mm - 70 mm
Width	1 m
Length	1m (Variable in case of rolls)

What is CR foam:

CR is the most flameproof foam between all kinds. Can be simply be implemented in aquatic structures although their most efficient usage is in sports equipment and medical braces and pads. Despite being a very demanding product, the price is reasonable.

Advantages:

Good Aging resistance, high elasticity and smooth surface, lightweight, chemical corrosion and heat resilience, highest density

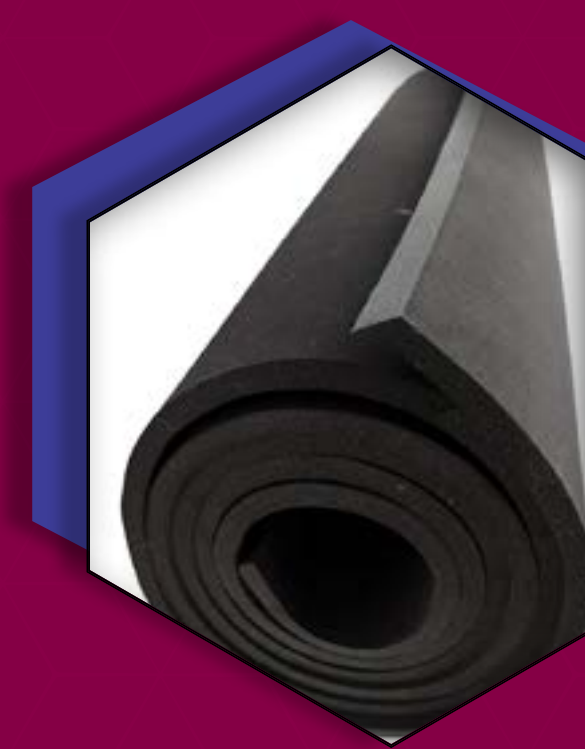
Disadvantages:

Can be degraded over time

Suggested Applications:

- Oil industry & energy
- Automotive industry
- Gaskets & Seals
- Sealing
- Home & electrical appliances and HVAC
- Stripes & tapes

NBR



UNITS	SPECIFICATIONS
Density	40 - 100 Kg/m ³
Thickness	10 mm 30- mm
Width	1 m
Length	1m (Variable in case of rolls)

What is NBR foam:

NBR (Nitrile Butadiene Rubber) is one of the most useful and efficient types of foam. Its resistance against chemicals and heat yet also its flexibility is exceptional. NBR is being used in very sensitive situations where other foam materials fail to endure or resist

Advantages:

Resistant to heat, Water, Oil and Acids, Strong Against Abrasion, Gas Permeability, Good Compression Set, Non Toxic Material and Affordability

Disadvantages:

Weak against highly polar solvents like acetone, Not suitable against MEK, Ozone and Hydrocarbon, also Low-Density foam product.

Suggested Applications:

- Great thermal insulation with low thermal conductivity
- Low moisture & water absorption
- Excellent acoustic insulation & sound dampening
- Cushioning accessory
- Cushioning accessory home & electrical appliances
- Ideal for Building & construction industry

EPDM



UNITS	SPECIFICATIONS
Density	80 - 180 Kg/m ³
Thickness	30 mm - 70 mm
Width	1 m
Length	1m (Variable in case of rolls)

What is EPDM foam:

EPDM foam (Ethylene Propylene Diene Monomer) is one of the open / closed cell rubber materials that is being produced in various types with different densities, hardness and sheet sizes. EPDM can be shaped easily with waterjet cuts that fits our customers desires.

Advantages:

Water and Sea water resistance, Ozone resistance, Good processing abilities and easily shaped and cut, high demand rate and ability to be combined

Disadvantages:

Low resistance to Oil, Gasoline, Halogenated Solvents and Concentrated Acidic Components.

Suggested Applications:

- Oil industry & Energy
- Automotive industry
- Gaskets & Seals
- Construction
- Home & Electrical Appliances
- Stripes & tapes



Hong Kong Foam is at your service to provide the best foam product with the highest quality and prices for more information, feel free to visit our website or contact us through the information below:

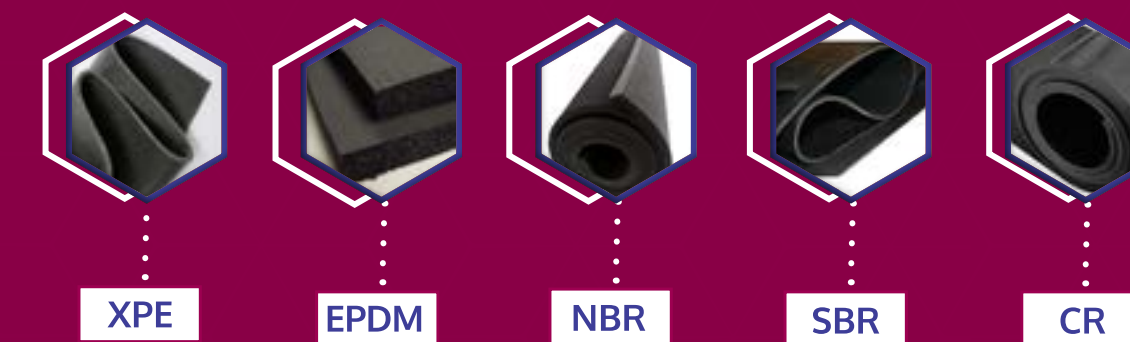


Unit 5 .503. F. Silvercord
Tower 30 2 Canton Road.
Tsimshatsui, Kowloon.
Hong Kong

info@hongkongfoam.com
+989194064240
www.hongkongfoam.com

Hong Kong foam is a company based on trust and mutual interest between foam product clients and manufactures. Quality is the main element of consideration in Hong Kong Foam while preserving the most affordable up-to-date prices accordingly. All of Hong Kong Foam products possess world-wide rubber and plastic standard licenses, ISO, DIM and ASTM. Hong Kong Foam company is a foam supplier with high diversity in products and linked manufacturing companies that can provide a wide-range of multi-purposed foam products with exclusive or varied applications.

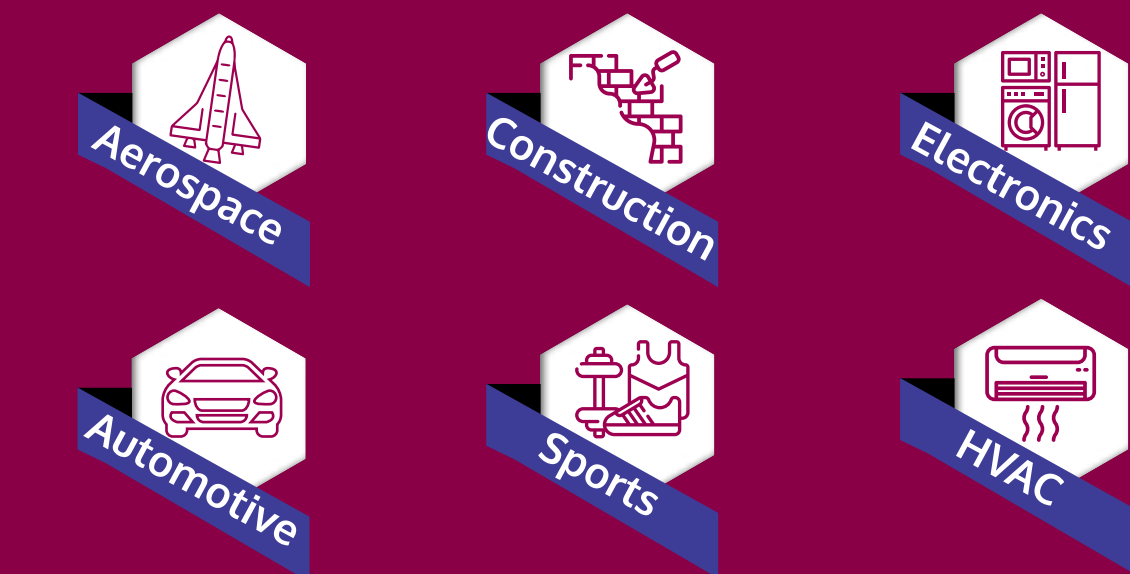
The main area of expertise in Hong Kong Foam is Polyethylene foam products with sub-categories:



Conversely, Hong Kong Foam does accept any foam order from other categories such as Polyurethane foam products or other Polyethylene sub-categories Like EVA or EPE

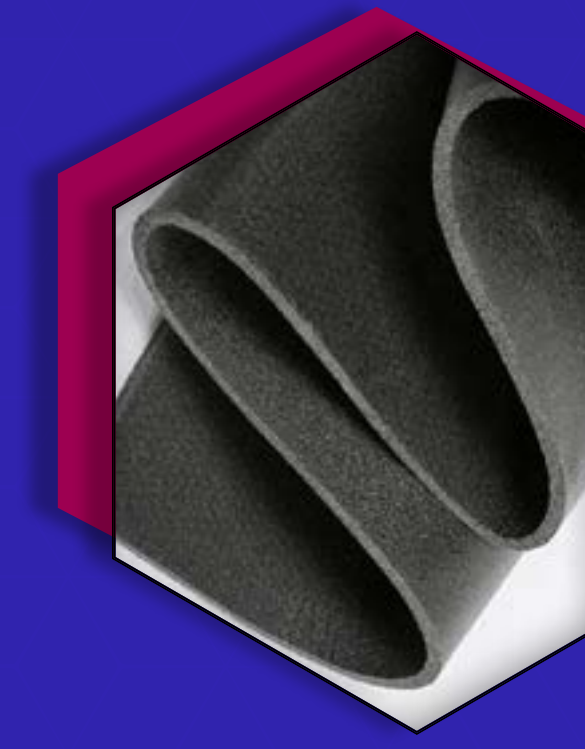
The freedom of choice for our customers indicate that every client has the opportunity to decide which type of foam product can be the most appropriate choice for their expected application or characteristics.

Applications of HongKong Foam materials are diverse with numerous implementations in many lines of work including:



www.hongkongfoam.com

XPE



UNITS	SPECIFICATIONS
Density	80 - 200 Kg/m ³
Thickness	1 mm - 12 mm
Width	1 m
Length	1m (Variable in case of rolls)

What is CR foam:

XPE foam is chemically cross-Linked polyethylene foam product. Cross-Linking The PE foam makes it more resistant against certain substances like chemicals and also high ratio of heat resilience. Due to the cross-Linking procedure, the surface of the foam becomes considerably smooth and soft, also significantly lighter and more flexible.

Advantages:

Good Aging Resistance, High Elasticity and smooth surface, lightweight, chemical corrosion and Heat resilience, highest density

Disadvantages:

High water absorption ratio, harmful for health, cost

Suggested Applications:

- Home Appliances
- Automotive Industry
- Footwear & Sports
- Electronics
- Packaging
- Health Care
- Building
- Oil Industry

www.hongkongfoam.com



Hong Kong Foam
2021-2022